

# Wantage Community Hospital

**Final refurbishment plans**

**Public Meeting, Silver Band Hall**

**27<sup>th</sup> February 2025**



# **Welcome and opening remarks**

## **Councillor Jane Hanna**

Chair, Oxfordshire Joint Health Overview and Scrutiny Committee,  
Oxfordshire County Council

## **Councillor Jenny Hannaby**

Chair, Health Committee, Wantage Town Council and member of  
Oxfordshire Joint Health Overview and Scrutiny Committee

# Format and speakers

## ❖ **What's been happening since we were last here in July?**

Sue Butt, Transformation Director, Oxford Health NHS Foundation Trust

## ❖ **Final design plan and project timeline**

Dorothy O'Dell, Transformation Lead, Oxford Health NHS Foundation Trust

## ❖ **Update on the county's health and social care plan**

Dan Leveson, Executive Director for Oxfordshire, NHS Buckinghamshire, Oxfordshire and Berkshire West ICB

## ❖ **Update on services in expanded hospital**

Dorothy O'Dell, Transformation Lead, Oxford Health NHS Foundation Trust

Olivia Clymer, Director of Strategy and Partnerships, Oxford University Hospitals NHS Foundation Trust

## ❖ **Developing a sustainable travel plan**

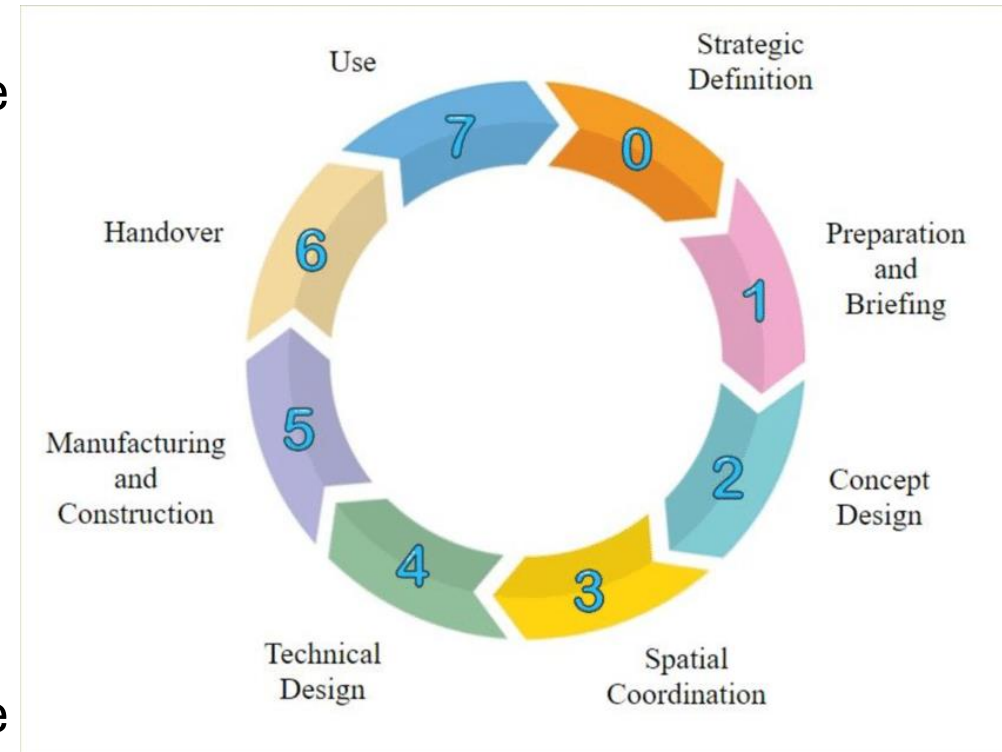
Dorothy O'Dell, Transformation Lead, Oxford Health NHS Foundation Trust

## ❖ **Final questions**

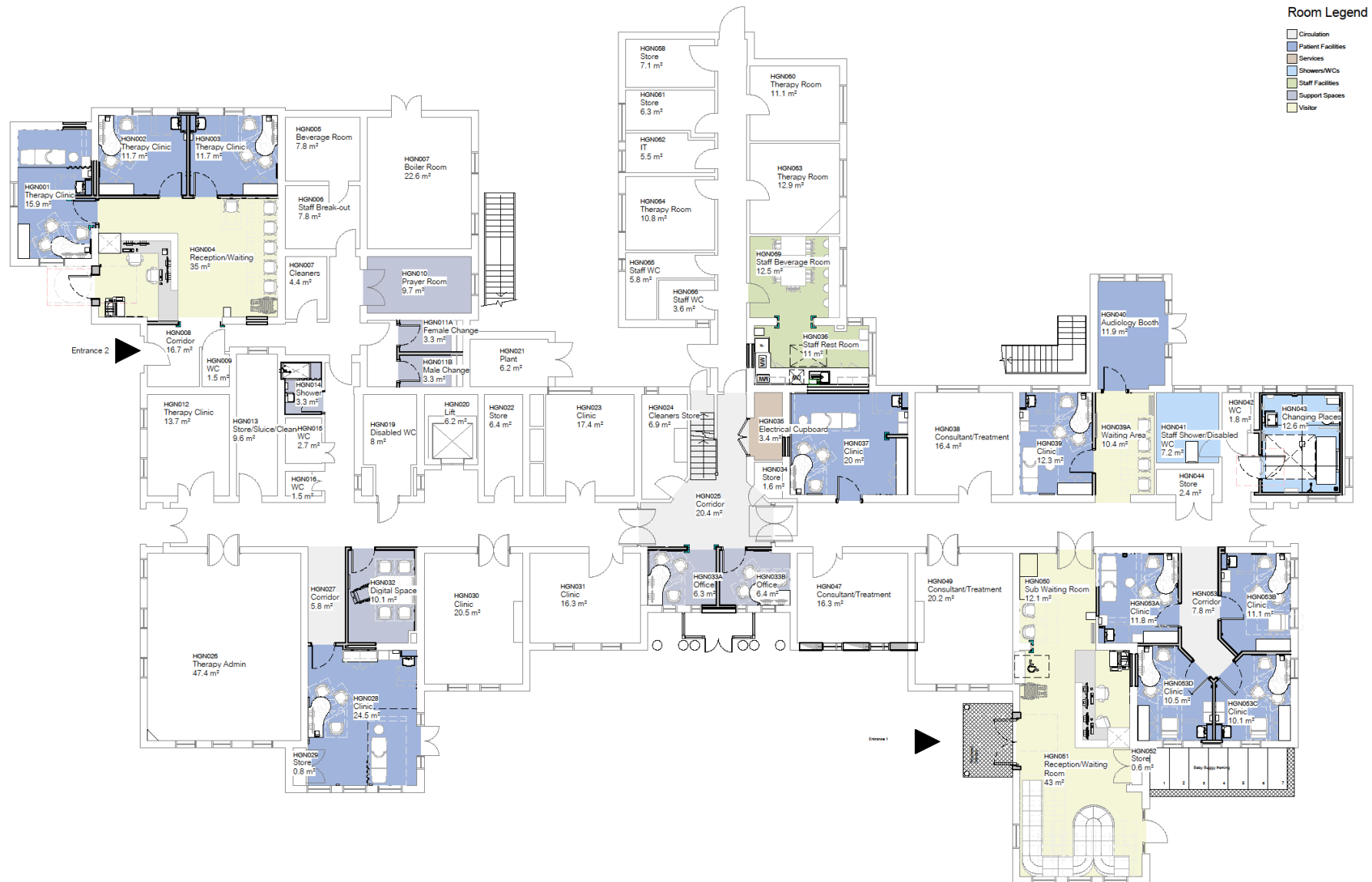
We will pause after each section for questions as well as time at the end to ask any remaining questions

# What's happened since we were last here in July?

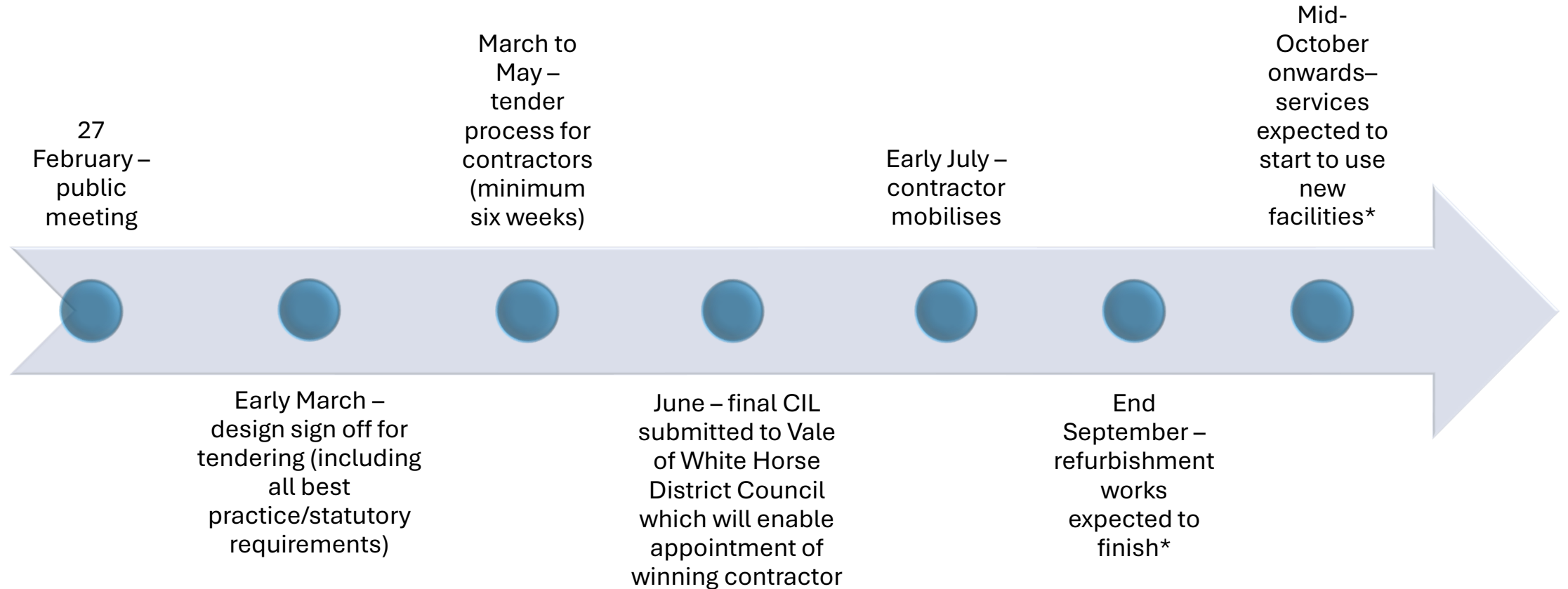
- ❖ We listened to your feedback around maximising the amount of space for services as well as co-locating mental health and physical healthcare services at the hospital.
- ❖ Additional 350k allocated from the Community Infrastructure Levy to add to the existing 600k
- ❖ Working with Oxford Health Charity, we have secured a significant legacy left for investment in Wantage Community Hospital. Will enhance patient, carer and family access and experience to the newly refurbished spaces – including a dedicated Changing Places room
- ❖ Following the Royal Institute of British Architects (RIBA) planning, design and procurement process, we are now engaging actively with potential contractors with the aim of appointing by Spring 2025 (Stage 4 -5)



# Final design plan for ground floor



# Project timeline – key next steps (all 2025)



\* Dependent upon final contractor programme, including existing services temporary room moves whilst works takes place

# Using art to help make Wantage community hospital feel welcoming and easy to find your way around

- ❖ Work is underway with the Oxford Health Charity in developing artwork for the refurbished ground floor that reflects feedback received from the local community.
- ❖ Work is underway to find the right local artist with whom to commission this work



# Update on the county's health and social care plan

**Since January 2024, local health and care services have been working together to:**

- ❖ Identify the outpatient services (existing and new) that will be available through Wantage Community Hospital
- ❖ Improving access to care in the community to enable people to stay well in their own homes or return home from a hospital stay much sooner

**This work is being taken forward taking into account the Government's emerging 10-year plan for the NHS to be published later this year, which is being designed to deliver three key priorities:**

- ❖ Moving care from hospitals to communities
- ❖ Making better use of technology
- ❖ Focussing on preventing sickness, not just treating it



# Existing and piloted services continuing at Wantage Community Hospital

- ❖ Ophthalmology, including intravitreal (eye) injections
- ❖ Audiology and ear, nose & throat (ENT)
- ❖ Additional audiology (Audiological Science)
- ❖ Mental health services (adult mental health, psychological therapies, Oxfordshire Talking Therapies, neuro-developmental)
- ❖ Learning disabilities services
- ❖ Diabetes screening (to be confirmed)
- ❖ Health visiting clinics, including group sessions
- ❖ GP clinics
- ❖ Expansion of musculoskeletal/physiotherapy (Connect Health)
- ❖ Ultrasound clinics (Health Share)
- ❖ Podiatry
- ❖ Adult and children's speech and language therapy
- ❖ Children's integrated therapy services
- ❖ Heart Failure
- ❖ Bladder and Bowel
- ❖ Midwife-led maternity unit (Oxford University Hospitals NHS FT, first floor)

# Update on additional services being considered for Wantage Community Hospital

## Oxford Health

- ❖ Adult mental health services\*
- ❖ Children and adolescent mental health services (CAMHS)
- ❖ Long term conditions clinic in collaboration with other health and care partners
- ❖ Respiratory physiotherapy
- ❖ Nutrition and dietetics

\*Expansion of existing services

## Oxford University Hospitals

- ❖ Ophthalmology\*
- ❖ Ear, nose and throat (ENT)\*
- ❖ Audiology\*
- ❖ Sexual health
- ❖ Epilepsy
- ❖ Non-medical prescribing
- ❖ Infusional therapy and neurology

\*Expansion of existing services

## Principal Medical Limited (GP Federation)

- ❖ Community urology
- ❖ Potentially community gynaecology

## Other services

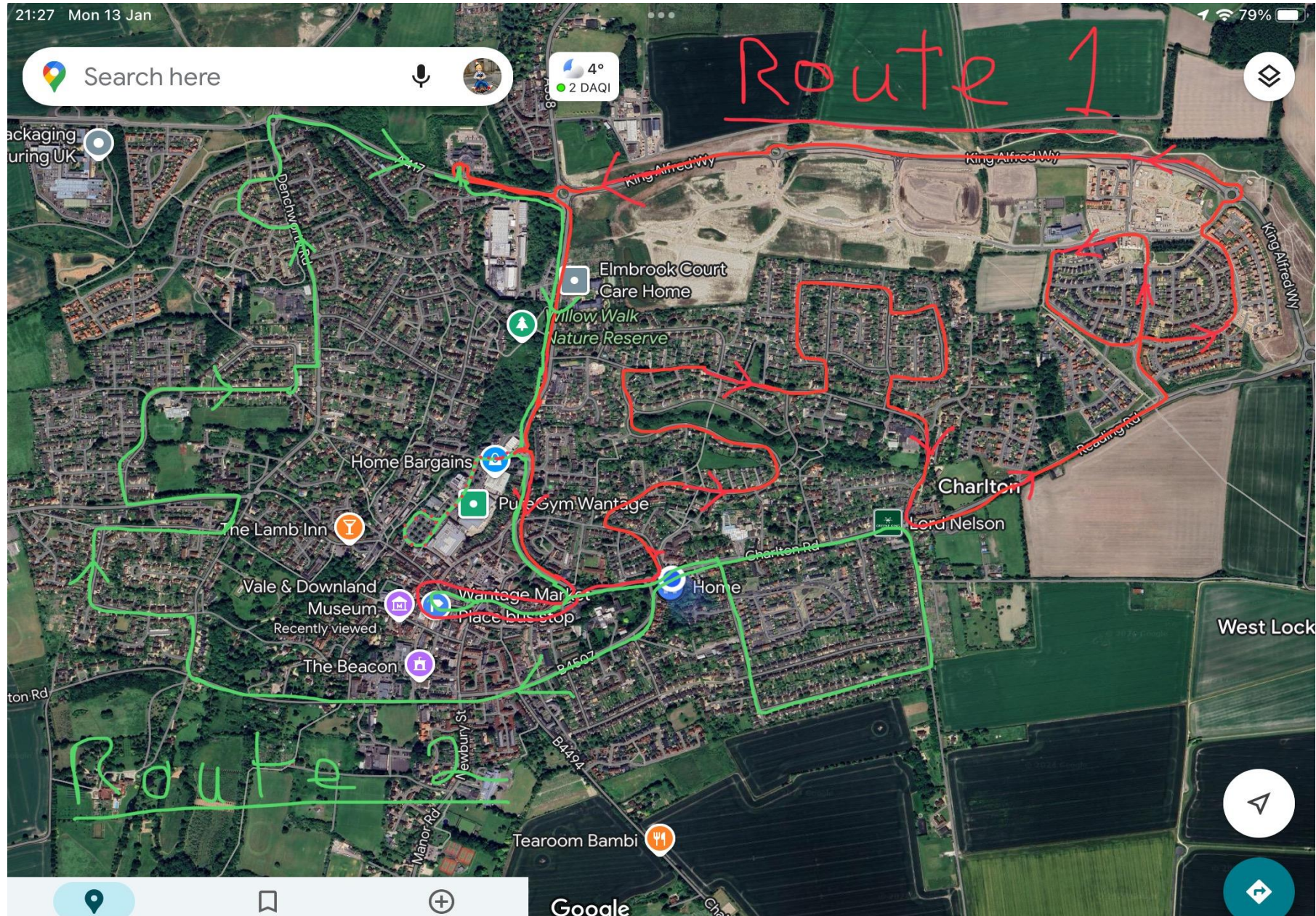
- ❖ Connect Health\* (musculoskeletal services)

\*Expansion of existing services

# Developing a sustainable travel plan

- ❖ Working with Oxfordshire County Council, the Town Council and Vale of White Horse District Council to identify options that will support sustainable travel plans for staff and patient/carers to access the hospital site, including plans for local community buses
- ❖ Initial engagement with existing staff around how they travel to and from the hospital, including home visiting teams
- ❖ Survey of existing patient/carer travel modes to take place alongside modelling of proposed new patient/carer groups
- ❖ Building on the ambitions set out in Oxford Health's Green Plan, as part of the NHS commitment to be 'net zero' by 2050 (travel, supply chains and estates) – supporting greater use of public transport, cycling and walking
- ❖ Being a good neighbour to those people living close to the hospital

# Proposed Wantage town community bus routes



# Your questions....



# Thank you and good evening

[Wantage Community Hospital | Oxford Health NHS  
Foundation Trust](#) for the latest updates

